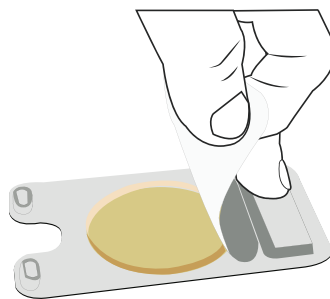
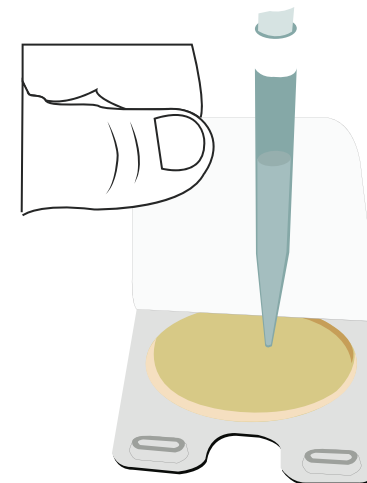


(1) Press Back and Lift Tab

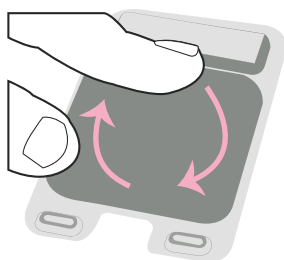


(2) Pull Up and Expose Culture Disk

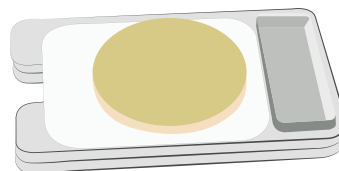


(3) **VERTICALLY PIPET TO CENTER**

1 mL In 2-3 Seconds 1-2 cm from surface



(4) Reseal Adhesive Cover



(5) Stack and Incubate Cover Down

32 ± 1 °C for 48 ± 3 hours for
milk and dairy products, or at 35 ± 1 °C
for foods and environmental sponge samples.



(6) Observe

Each spot represents 1 CFU. The sum of
red spots is reported as the CFU/mL or
CFU/gram per dilution tested.