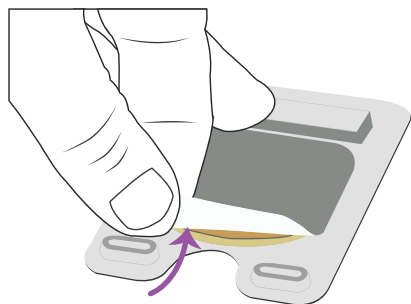
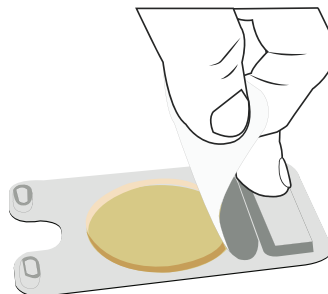


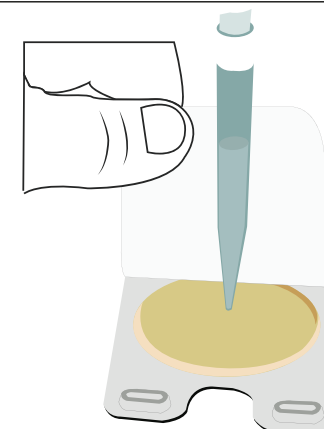
Charm Peel Plate® *E. coli*/Coliform Test Procedure



(1) Press Back and Lift Tab

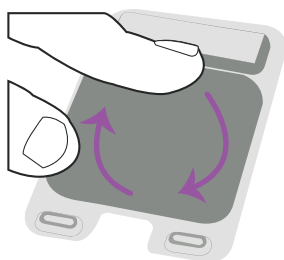


(2) Pull Up and Expose Culture Disk

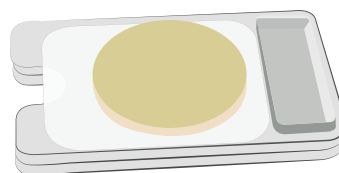


(3) **VERTICALLY PIPET TO CENTER**

1 mL In 2-3 Seconds 1-2 cm from surface

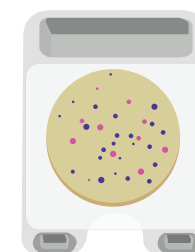


(4) Reseal Adhesive Cover



(5) Stack and Incubate Cover Down

- 32 ± 1 °C for 24 ± 2 hours for milk and dairy products.
- 35 ± 1 °C for water, environmental, and food samples.



(6) Observe

Sum of Colonies = Total Coliform

RED = Coliform
BLUE / PURPLE = Generic *E. coli*